

SMARTJUICE COLD PRESS SLOW JUICER

Maximum nutrition, minimum effort

BOROSIL®

Performs Beautifully



USER MANUAL

BSJU13WB03

READ ALL INSTRUCTIONS BEFORE USING THIS APPLIANCE

140 (W) X 215 (H) MM CLOSE SIZE

INTRODUCTION

Congratulation on your purchase of
BOROSIL SMARTJUICE COLD PRESS SLOW JUICER!

IMPORTANT SAFEGUARDS

When using electrical appliances, basic safety precautions should always be followed including the following:

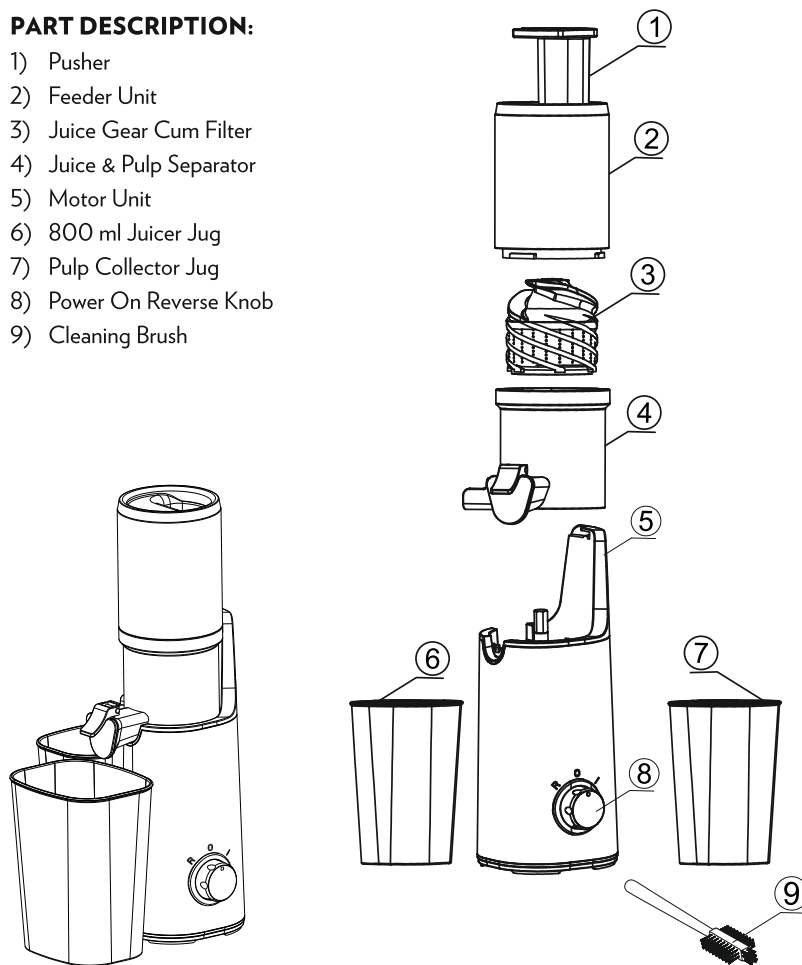
- Use only 230V, 50Hz AC power supply.
- Do not operate the appliance if it has malfunctioned or has been damaged in any manner. Never try to repair the product by yourself. Contact our Customer Care Toll free no. **1800 2106 520/1800 224 552** or e-mail us at **myborosil@borosil.com** for examination and repair.
- The product is applicable for household and not for commercial purpose. Outdoor use can be dangerous.
- Do not let power cord hang over the edge of the table or counter, or touch hot surfaces.
- This appliance is not intended for use by persons (including children) with reduced physical, sensory or mental capabilities, or lack of experience and knowledge, unless under supervision or given instructions concerning the usage of the appliance by a person responsible for their safety. Children should be supervised to ensure that they do not play with the appliance.
- Before using, place the appliance on an even, stable surface; operate according to the instructions given.
- Before dismantling or installing any part of the product, disconnect the power supply.
- To prevent accident, do not immerse the machine into water. You may scrub with soft cloth.
- Keep fingers or hard objects out of feeder unit during operation. Contact with the squeezing gear would cause injury or product may get damaged.
- Use the original product provided by manufacturer. Never use other objects instead of the material pusher. To prevent accidents, keep eyes out of the feeder tube.
- After juicing, turn switch to "O" and do not dismantle product accessory until the motor is completely stopped.
- Do not operate the product without being watched.
- To prevent product damage during use, do not add hard object (such as nuts), fiber-rich foods (such as sugar cane), less-juice foods (such as banana) and non-food object from feeder tube. Do not put frozen fruit or ice.
- To prevent injury and damage, use pusher instead of hand if foods are stuck at the feeder tube.
- When not in use, remove the plug and shut off the power supply. Store the product at a dry place away from direct sunlight.

SAVE THESE INSTRUCTIONS

DESCRIPTION OF PRODUCT

PART DESCRIPTION:

- 1) Pusher
- 2) Feeder Unit
- 3) Juice Gear Cum Filter
- 4) Juice & Pulp Separator
- 5) Motor Unit
- 6) 800 ml Juicer Jug
- 7) Pulp Collector Jug
- 8) Power On Reverse Knob
- 9) Cleaning Brush



TECHNICAL SPECIFICATIONS

Product	: SLOW JUICER
Model Name	: SMARTJUICE COLD PRESS SLOW JUICER
Item Code	: BSJU13WB03
Rated Voltage	: 230VAC
Rated Frequency	: 50Hz
Rated Power	: 130W
Household Use Only	

HOW TO USE

BEFORE USING

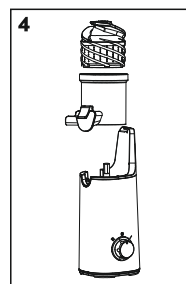
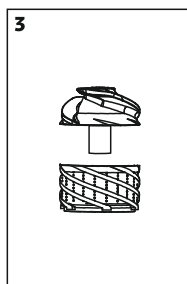
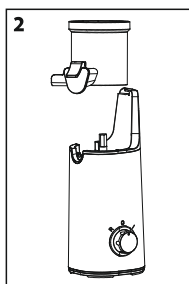
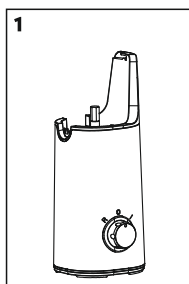
- Read all instructions carefully and keep them for future reference.
- Dismantle package and place all parts on a flat table.
- Before startup, take out all accessories, reinstall the machine before trial operation.
- Immerse all removable parts and accessories in warm water and dry them. To prevent electric shock and machine damage, do not immerse the main machine in water.
- Before assembly, make sure the cord is not connected to a power source and the switch is at "O" position.
- Use only the accessories recommended by the manufacturer.
- Do not operate this unit without any load
- After every use, turn off the switch and before dismantling make sure the motor has stopped rotating and, then pull out the plug.

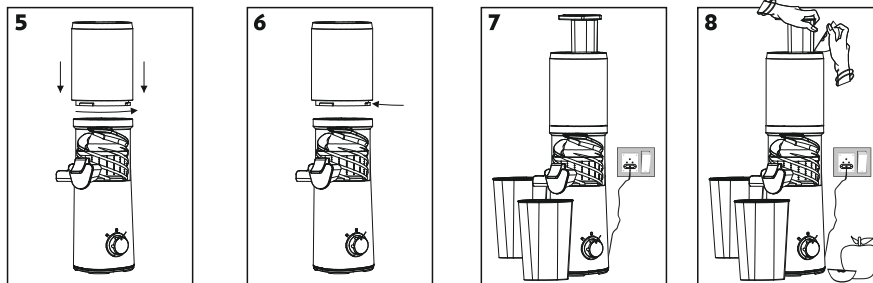
REMARK:

- Before use, assemble all parts as per drawing, otherwise the normal operation would be affected.
- Do not use with wet hands.
- It is recommended to stand on a rubber mat/insulated surface or with wear rubber slippers while using the appliance to avoid electric shock in case the product malfunctions.

HOW TO ASSEMBLE:

1. Assemble the pulp and juice separator onto the motor unit, the separator bowl must be fixed to the same point as the motor unit (Fig. 1 & 2).
2. Assemble the squeezer and the strainer into one part (Fig 3).
3. Place the squeezer unit inside the separator bowl and rotate until it falls into the right place (Fig 4).
4. Assemble the feeder onto the separator bowl (Fig 5).
5. Twist the feeder clockwise to align the slot on the feeder with the lock-unlock mark, and then fix it till the feeder gets locked. (Fig 6).
6. Place Juicer bowl under the juice outlet and pulp collector bowl under the pulp outlet. Put the power plug into the main socket and switch on the main supply. (Fig 7).
7. Insert the small pieces of fruits from the top and push them down with the help of the pusher. (Fig 8).





JUICING

1. Ensure all accessories are correctly installed and the juice collector and pulp collector are properly placed.
2. Put the power plug into the main socket and switch ON the main supply.
3. In order to insert fruits in the feeder unit easily, cut fruits into small pieces.
4. To start the juicing process select the switch from "O" to "I" position; the juicer will start operating.
5. Put the fruit pieces into the feeder tube and slowly push it down with the pusher, in order to avoid the fruit pieces from getting stuck in the feeder tube.
6. Make sure the juice outlet cap is in open position in order to collect the juice into the juice jug and ensure that the pulp is getting collected into the pulp collector.
7. To clean the filter / to remove the stuck pulp shift the switch to "II" position. The motor will rotate in reverse direction and the stuck pulp will get resolved.

NOTE:

- a) Fruits with less juice such as banana, apricot, etc. are not recommended to be used in the Slow Juicer.
- b) To prevent product damage during use, do not add hard objects or hard food material like sugarcane, nuts, the core of pineapple or raw fruits like unpeeled lemon
- c) Make sure to run the appliance for a maximum of 10 minutes in case of soft fruits, such as apple or pear. For tough fruits and vegetables, like carrots, the maximum time is 8 minutes. It has an intelligent safety feature to sense overheat, so If suddenly it turns off due to long use, please wait until it resumes. **Depending on the circumstance and the temperature of the motor, it can take time (approx. 40 mins) to resume.**

CLEANING AND MAINTENANCE

1. Place on a flat surface and wipe the surface with a cloth
2. Before cleaning, unplug the power plug from the main socket and let the machine stop completely.
3. Remove all the parts in a reverse procedure. Rinse with clean water.
4. Clean all the accessories with water except the motor unit
5. After juicing, remove all parts as per reverse procedure
6. Use the brush to wash the squeezer, filter and juicing jug with running tap water.
7. After cleaning, dry the product with a dry cloth, install and store it in a dry and safe place.
8. Before flushing the outlet of feeder tube, pull out the bottom silicone sheet and, after cleaning, install silicone sheet correctly;
9. Please close the lid every time before use

Warning: To prevent scratches, take care and properly clean the mesh of strainer.

TROUBLESHOOTING

Problem	Solution
Juicing failure / no dry pulp	Be sure the assembly is correct. If food is stuck inside, switch off the appliance, remove the power cord, dismantle and clean the part before use. Check if fresh materials are selected; Materials that have been stored in refrigerator for a long time should be defrosted in clean water before use. Make sure the fruits must be fresh and should not be dry. Fruits like Sugar cane , Gooseberry are not recommended for the juicing. Better in juicing the fruits & Vegetable as below - Carrot, Green Apple, Citrus/Orange, Pomegranate, Beetroot, Pine apple etc.
Operation stops in between	Check if too much food stuff is inserted in the Slow Juicer Check if the fruit is not pitted. Press down "O" under standby state for 3-5 sec, then press down "II" 3-5 sec to reversely operate the product, and press down ON. If squeezing gear does not work, check if the main unit is heated up, if yes, wait for approx. 40 mins till the motor cools down and it automatically starts again. If still doesn't start, stop using the product, switch off the mains and remove the plug, dismantle the parts of feeder tube and clean the parts before use.
Abnormal noise during juicing	Check the following: Slow Juicer is running with no food material inserted. Hard food material inserted. Accessories are not properly installed.
Unpleasant smell is emitted	This is a normal phenomenon when using the appliance for the first time, the smell will disappear after the appliance works for a while.

ENVIRONMENT FRIENDLY DISPOSAL



You can help protect the environment!

Please remember to respect the local regulations:

Hand in the non-working electrical equipment to an appropriate waste disposal center.

WARRANTY FOR REPAIR & SERVICES

This product comes with a warranty of One Year on product from the date of purchase as specified on the Warranty Card. This is against all defective material or workmanship. In the event of a defect, Borosil Limited at its sole choice, will either repair or replace this product or any component of the product found to be defective free of cost through the dealer from whom it has been purchased or at any of the Borosil Authorized Service Centre or at Customer place during the warranty period.

For any information or problem, contact Borosil Customer Care Toll free no. **1800 2106 520/1800 224 552** or e-mail us at **myborosil@borosil.com** or contact your local dealer or Borosil Authorized Service Centre and provide information about the defect with the model number and the serial number of the product.

The warranty is not valid in case:

1. Product is not used according to user manual.
2. Defects caused by improper or reckless use.
3. Repairs done by persons other than Borosil Authorized Service Centre.
4. Modifications of any nature made in the product.
5. Tampered serial number and incomplete warranty card after purchase.
6. Product if used for commercial purpose (i.e. other than domestic use).
7. Usage of parts not recommended by Borosil or those made by other manufacturers.
8. The model no. on the invoice is different from the product to be repaired.
9. Borosil is not responsible for accidents arising due to the use of accessories not designed for the utilisation with this product.
10. If the defects are caused by fire, flood and the other act of god.
11. If the defects are caused by use of incorrect current or voltage or faulty electric power supply.
12. All consumables and parts susceptible to normal wear & tear are not covered under warranty.
13. This warranty does not cover damage or injury caused by accident, mishandling, misuse or normal wear and tear or for loss of injury, directly or indirectly arising out of use of this product. The decision of the company in this regard shall be final.
14. If the product is used with any type of adapter or connector.
15. If the product is used in locations with different electrical specifications.

WARRANTY CARD		BOROSIL®
THIS CARD IS VALID ONLY IF IT IS FILLED IN COMPLETELY, SIGNED AND STAMPED BY THE DEALER ON THE DATE OF PURCHASE		
MODEL CODE :	BSJU13WB03	
CUSTOMER'S NAME :		
ADDRESS :		
PHONE NO. RESIDENCE :	OFFICE :	
DATE OF PURCHASE & BILL NO. :		
DEALER NAME & SIGN :		
CUSTOMER'S SIGNATURE :		
DEALER'S STAMP		

BOROSIL®

CORPORATE OFFICE :

BOROSIL LIMITED

1101, Crescenzo, G-Block, BKC, Bandra (East), Mumbai - 400 051, Maharashtra.
Website: www.borosil.com | Customer Care Toll Free No.: 1800 2106 520/1800 224 552
Email id: myborosil@borosil.com | Tel: 022 6740 6300 | Fax: 022 6740 6514
CIN NO.: L36100MH2010PLC292722

SALES OFFICE :

MUMBAI:

Kanakia Zillion, B-Wing, Unit No. 306, L.B.S. Marg, Next to Kurla Bus Depot,
Kurla (W), Mumbai - 400 070.
Tel.: 022 6740 6400 | Fax: 022 6740 6444
email: mumbaisales@borosil.com

DELHI:

19/90, P-Block, Connaught Place (Madras Hotel Block), New Delhi - 110 001.
Tel.: 011 2334 3897 / 2374 2136 | Fax: 011 2374 6689
email: delhi@borosil.com

CHENNAI:

New No. 20, (Old No. 9) 1st Floor, Brahdammal Road, Nungambakkam, Chennai - 600 034.
Tel.: 044 2822 6012 / 2822 6013 | Fax: 044 2822 6014
email: borosilmso@ethnet / chennai@borosil.com

KOLKATA:

E-2/3, 2nd Floor, Gillander House, Netaji Subhash Road, Kolkata, West Bengal - 700 001.
Tel.: (033) 2229-9166, 2226-2045
email: calcutta@borosil.com

GURUGRAM:

201, 2nd Floor, CRS Towers, Plot No. 77-B, Village Sarhaul, Iffco Road, Sector-18,
Gurugram, Haryana - 122 015. Tel.: +91 124 6926 318



Now shop India's most trusted brand online at www.myborosil.com

Follow us on Borosil And You

Back Cover - Close Size - 140 x 215 mm