

# NUTRIRICH JU02 SLOW JUICER

Maximum nutrition, minimum effort

# BOROSIL®

Performs Beautifully



## USER MANUAL

BSJU02

---

**READ ALL INSTRUCTIONS BEFORE USING THIS APPLIANCE**

---

| 140 (W) X 215 (H) MM CLOSE SIZE |

## INTRODUCTION

Congratulations on your purchase of  
**BOROSIL NUTRIRICH JU02 SLOW JUICER!**

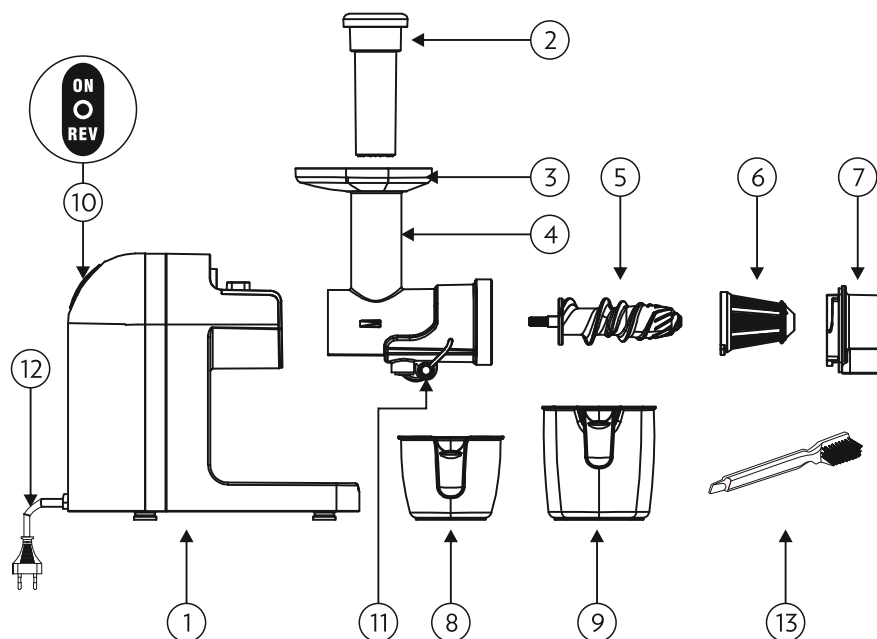
## IMPORTANT SAFEGUARDS

**When using electrical appliances, basic safety precautions should always be followed including the following:**

**Read all instructions before using the product.**

1. Use only 230V, 50Hz AC power supply.
2. Do not operate the appliance if it has malfunctioned or has been damaged in any manner. Never try to repair the product by yourself. Contact our CustomerCare Toll free no. **1800 2106 520/1800 224 552** or e-mail us at **myborosil@borosil.com** for examination and repair.
3. The product is applicable for household and not for commercial purpose.
4. Do not let power cord hang over the edge of the table or counter, or touch hot surfaces.
5. This appliance is not intended for usage by persons (including children) with reduced physical, sensory or mental capabilities, or lack of experience and knowledge, unless under supervision or given instructions concerning the usage of the appliance by a person responsible for their safety. Children should be supervised to ensure that they do not play with the appliance.
6. Before using, place the appliance on an even, stable surface; operate according to the instructions given.
7. Before dismantling or installing any part of the product, disconnect the power supply.
8. To prevent accident, do not immerse the machine into water. You may scrub with soft cloth.
9. Keep fingers or hard objects out of feeder tube during operation. The contact with the squeezing gear would cause injury or product may get damaged.
10. Use the original product provided by manufacturer. Never use other objects instead of the material pusher. To prevent accident, keep eyes out of the feeder tube.
11. After juicing, turn switch to "O" and do not dismantle product accessory until the motor is completely stopped.
12. Do not operate the product without being watched.
13. To prevent injury and damage, use pusher instead of hand if foods are stuck at the feeder tube
14. Store the product at a dry place, away from direct sunlight.

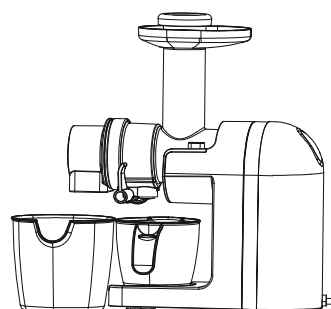
## DESCRIPTION OF PRODUCT



### Part Identification:

- |                    |                               |
|--------------------|-------------------------------|
| 1) Motor Unit      | 8) 400 ml Juice Jug           |
| 2) Pusher          | 9) 800 ml Pulp Separator      |
| 3) Fruit Tray      | 10) Power On & Reverse Switch |
| 4) Feeder Tube     | 11) Anti-drip Juice Tap       |
| 5) Squeezing Gear  | 12) Power Cord                |
| 6) Juice Filter    | 13) Cleaning Brush            |
| 7) Pulp Outlet Cap |                               |

TECHNICAL SPECIFICATIONS	
Product	: SLOW JUICER
Model Name	: NUTRIRICH JU02
Item Code	: BSJU02
Rated Voltage	: 230VAC
Rated Frequency	: 50Hz
Rated Power	: 200W
Household Use Only	



## HOW TO USE

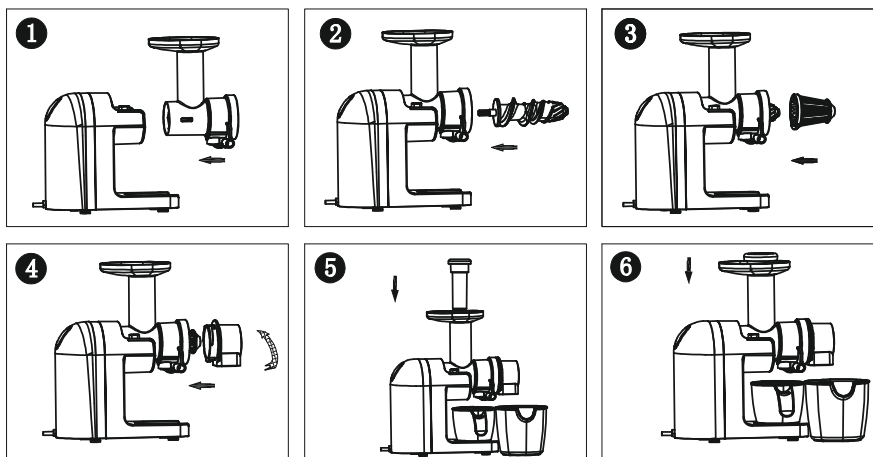
### BEFORE USING

- Read all instructions carefully and keep them for future reference.
- Dismantle package and place all parts on a flat table.
- Before starting, take out all accessories, reinstall the motor before trial operation.
- Immerse all removable parts and accessories in warm water and dry them. To prevent electric shock and motor damage, do not immerse the motor unit in water.
- Before assembly, be sure no power lines are inserted and the switch is at "O" position.
- Use only the accessories recommended by the manufacturer.
- After each use, turn off switch "O" and before dismantling parts, be sure the motor has stopped rotating, pull out the power cord from the main socket.

**Remark:** Before use, assemble all parts as per drawing, otherwise the normal operation would be affected.

### DETAILED OPERATION PROCEDURES:

1. Take out feeder attachment and align it within the groove of motor unit (See Figure 1)
2. Take out squeezing gear to align it with motor shaft (See Figure 2)
3. To align the juice filter with the feeder attachment, insert and rotate till it matches with the groove (See Figure 3)
4. Next align the pulp outlet cap with the feeder attachment as per the locking direction given on the cap (See Figure 4). Rotate clockwise for tightening and anticlockwise for loosening
5. Place the juicer jug under the juice tap and the pulp collector under the pulp outlet cap (See Figure 5)
6. After the assembly, plug the cord into the wall socket and switch on the main supply.
7. Press the switch to the "R" (reverse) position for a moment to check whether the juicer starts.
8. Press the switch to the "ON" position and start using the juicer by inserting the food through the feeder tube.
9. You can use the Pusher rod in the direction shown, to help juicing the inserted food hassle-freely (See Figure 6).



## JUICING

1. Ensure all accessories are correctly installed and the juice collector and pulp collector are properly placed.
2. Put the power plug into the main socket and switch ON the main supply.
3. **In order to insert fruits in the feeder tube easily, cut fruits into pieces.**
4. To start the juicing process select the switch from "O" to "ON" position; the juicer will start operating.
5. Put the fruit pieces into the feeder tube and slowly push it down with the pusher, in order to avoid the fruit pieces from getting stuck in the feeder tube.
6. Make sure the juice outlet cap is in open position in order to collect the juice into the juice jug and ensure that the pulp is getting collected into the pulp collector.
7. To remove the stuck pulp shift the switch to "R" position. The motor will rotate in reverse direction and the stuck pulp will get resolved.

### NOTE:

- a) Fruits with less juice such as banana, apricot, etc. are not recommended to be used in the Slow Juicer.
- b) To prevent product damage during use, do not add hard objects or hard food material like sugarcane, nuts, the core of pineapple, raw fruits like unpeeled lemon.
- c) Make sure the Slow Juicer does not run continuously for more than 10 minutes.

## CLEANING AND MAINTENANCE

1. Before cleaning, unplug the power plug from the main socket and let the machine stop completely.
2. Remove all the parts in a reverse procedure.
3. Clean all the accessories with water except the motor unit.
4. Clean the pulp outlet under the tap water pressure.
5. After cleaning, dry the product with a dry cloth, install and store it in a dry and safe place.
6. Use cleaning brush to clean the pulp which is stuck inside the filter.
7. Use bottom part of cleaning brush to clean the pulp outlet under the tap water pressure.

**Warning:** To prevent scratches, take care and properly clean the mesh of filter.

## ENVIRONMENT FRIENDLY DISPOSAL



You can help protect the environment!

Please remember to respect the local regulations: Hand in the non-working electrical equipment to an appropriate waste disposal centre.

## TROUBLESHOOTING

Problem	Solution
Fail to operate	Check power plugs and ensure that the Slow Juicer is correctly assembled.
Juicing failure / no dry pulp	Check if fresh materials are selected; Materials that have been stored in refrigerator for a long time should be defrosted in clean water before use.
Operation stops in between	Remove the stuck fruit/vegetable particle inside the juice gear & restart the process. To remove the stuck food, press the switch to "O" position for 3-5 seconds, then bring it to "R" for 3-5 seconds to reversely operate the product, and then bring back to "ON". If squeezing gear does not work, stop using the product, dismantle the parts of feeder tube, and clean the parts before use.
Abnormal noise during juicing	Check the following: Slow Juicer is running with no food material inserted. Hard food material inserted. Accessories are not properly installed.
Unpleasant smell being emitted when using the appliance for the first time.	The motor will need some time to running-in before using for first time. This is normal phenomenon, the smell will disappear after the appliance works for a while.
Machine emits sound while juicing and vibrates	It is normal for the machine to produce some sound as it squeezes the fruits or vegetables. Depending on the type of ingredient, hard ingredients (such as carrot, potato, beetroot, radish and etc.) may cause the machine to emit louder than soft ingredients.

## WARRANTY FOR REPAIR & SERVICES

This product comes with a warranty of Two Years on product from the date of purchase as specified on the Warranty Card. This is against all defective material or workmanship. In the event of a defect, Borosil Limited at its sole choice, will either repair or replace this product or any component of the product found to be defective free of cost through the dealer from whom it has been purchased or at any of the Borosil Authorized Service Centre or at Customer place during the warranty period.

For any information or problem, contact Borosil Customer Care Toll free no. **1800 2106 520/1800 224 552** or e-mail us at **myborosil@borosil.com** or contact your local dealer or Borosil Authorized Service Centre and provide information about the defect with the model number and the serial number of the product.

**The warranty is not valid in case:**

1. Product is not used according to user manual.
2. Defects caused by improper or reckless use.
3. Repairs done by persons other than Borosil Authorized Service Centre.
4. Modifications of any nature made in the product.
5. Tampered serial number and incomplete warranty card after purchase.
6. Product if used for commercial purpose (i.e. other than domestic use)
7. Usage of parts not recommended by Borosil or those made by other manufacturers.
8. The model no. on the invoice is different from the product to be repaired
9. Borosil is not responsible for accidents arising due to the use of accessories not designed for the utilisation with this product.
10. If the defects are caused by fire, flood and the other act of god.
11. If the defects are caused by use of incorrect current or voltage or faulty electric power supply.
12. All consumables and parts susceptible to normal wear & tear are not covered under warranty.
13. This warranty does not cover damage or injury caused by accident, mishandling, misuse or normal wear and tear or for loss of injury, directly or indirectly arising out of use of this product. The decision of the company in this regard shall be final.
14. If the product is used with any type of adapter or connector.
15. If the product is used in locations with different electrical specifications.

WARRANTY CARD		BOROSIL®
THIS CARD IS VALID ONLY IF IT IS FILLED IN COMPLETELY, SIGNED AND STAMPED BY THE DEALER ON THE DATE OF PURCHASE		
MODEL CODE :	<b>BSJU02</b>	
CUSTOMER'S NAME :		
ADDRESS :		
PHONE NO. RESIDENCE :		OFFICE :
DATE OF PURCHASE & BILL NO. :		
DEALER NAME & SIGN :		
CUSTOMER'S SIGNATURE :		
DEALER'S STAMP		

# BOROSIL®

## CORPORATE OFFICE :

### BOROSIL LIMITED

1101, Crescenzo, G-Block, BKC, Bandra (East), Mumbai - 400 051, Maharashtra.  
Website: [www.borosil.com](http://www.borosil.com) | Customer Care Toll Free No.: 1800 2106 520/1800 224 552  
Email id: [myborosil@borosil.com](mailto:myborosil@borosil.com) | Tel: 022 6740 6300 | Fax: 022 6740 6514  
CIN NO.: L36100MH2010PLC292722

## SALES OFFICE :

### MUMBAI:

Kanakia Zillion, B-Wing, Unit No. 306, L.B.S. Marg, Next to Kurla Bus Depot,  
Kurla (W), Mumbai - 400 070.  
Tel.: 022 6740 6400 | Fax: 022 6740 6444  
email: [mumbaisales@borosil.com](mailto:mumbaisales@borosil.com)

### DELHI:

19/90, P-Block, Connaught Place (Madras Hotel Block), New Delhi - 110 001.  
Tel.: 011 2334 3897 / 2374 2136 | Fax: 011 2374 6689  
email: [delhi@borosil.com](mailto:delhi@borosil.com)

### CHENNAI:

New No. 20, (Old No. 9) 1st Floor, Brahdammal Road, Nungambakkam, Chennai - 600 034.  
Tel.: 044 2822 6012 / 2822 6013 | Fax: 044 2822 6014  
email: [borosilmso@ethnet](mailto:borosilmso@ethnet) / [chennai@borosil.com](mailto:chennai@borosil.com)

### KOLKATA:

E-2/3, 2nd Floor, Gillander House, Netaji Subhash Road, Kolkata, West Bengal - 700 001.  
Tel.: (033) 2229-9166, 2226-2045  
email: [calcutta@borosil.com](mailto:calcutta@borosil.com)

### GURUGRAM:

201, 2nd Floor, CRS Towers, Plot No. 77-B, Village Sarhaul, Iffco Road, Sector-18,  
Gurugram, Haryana - 122 015. Tel.: +91 124 6926 318



Now shop India's most trusted brand online at [www.myborosil.com](http://www.myborosil.com)

Follow us on Borosil And You

Back Cover - Close Size - 140 x 215 mm